



(INT+43 1/ NAT 01)  
TEL 360 20 - 0 / FAX - 1234  
A-1194 VIENNA, P.O. BOX 2

## GG-CONSTRUCTION MODEL

-FOR GUIDANCE PURPOSES ONLY, SPECIFICATIONS ARE SUBJECT TO CHANGE-

**X 4408**

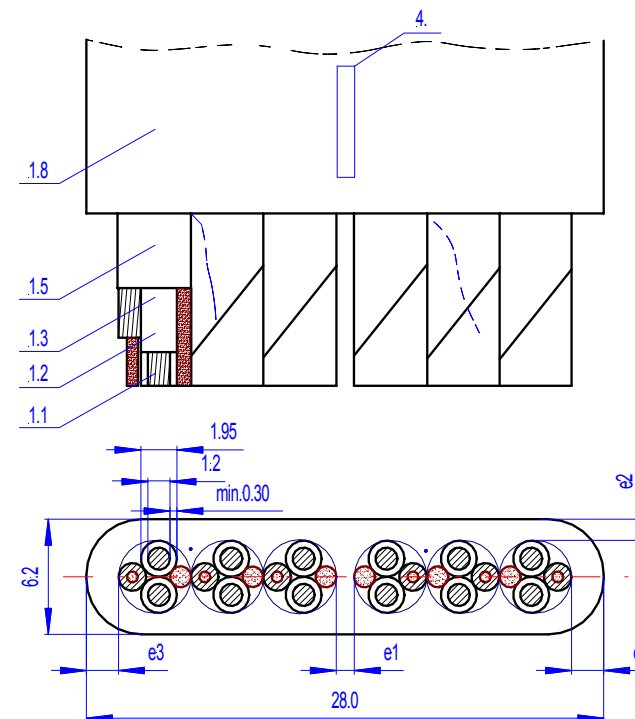
GG-STANDARD

**E1**

ISSUE

### 1. DESIGN DATA

- 1.1 CONDUCTOR** : Bare copper wires,  
material and conductor arrangement according to CENELEC HD 383,  
fine strand, class 5.
- 1.2 INSULATION** : PE, type 2Y11 according to DIN VDE 0207/T2,  
Shore D  $48 \pm 5$  according to DIN 53505,  
nominal wall thickness/min. wall thickness: 0.40/0.30 mm  
Diameter: 1.9 - 2.0 mm  
colour : wh with black numbers 1-12
- 1.3 EARTH CONDUCTOR** : tinned copper wires (16 wires, max.  $\varnothing$  0.15mm)  
twisted over cotton-filler,  
material according to CENELEC HD 383,  
fine strand, class 6.
- 1.4 STRANDING** : 2 cores (wh with black numbers)  
with earth conductor and cotton-filler twisted together  
lay (approx.): 37mm.
- 1.5 SCREENING** : Al-PETP-foil, thickness Al: 0.034mm  
metallic side in contact with the earth conductor.
- 1.6 ARRANGEMENT** : summarized in groups, each group includes rip cord
- 1.7 PARTING COMPOUND** : GG-special parting compound.
- 1.8 SHEATH** : FRNC, Shore A  $95 \pm 5$  according to DIN 53505,  
colour : bk (RAL 9005),  
testing according to CENELEC HD 21.1/S2.



### 2. ELECTRICAL CHARACTERISTICS

- 2.1 RATED VOLTAGE (50 Hz)** : 300/300 V(rms).
- 2.2 TESTING VOLTAGE (50 Hz)** : core/core: 1.5kV(rms)  
core/screen: 800V(rms)
- 2.3 MAX. CONDUCTOR RESISTANCE** : 26,0 $\Omega$ /km at 20°C
- 2.4 MIN. INSULATION RESISTANCE** : 20 000 M $\Omega$ .km at 20°C

### P o l y f l e x

flat FRNC-sheathed, flexible cable with  
screened pairs for lift.

**Type LEAFL-2YAENY-OZ 6x2x0,75F sw**

GG-PART No.

66797

DESIGNED

STRASSER

CHECKED

PALMSTEINER

DATE

20.02.06

EXTERNAL SPECIFICATION

-

PAGE

1 of 2



(INT+43 1/ NAT 01)  
TEL 360 20 - 0 / FAX - 1234  
A-1194 VIENNA, P.O. BOX 2

## GG-CONSTRUCTION MODEL

-FOR GUIDANCE PURPOSES ONLY, SPECIFICATIONS ARE SUBJECT TO CHANGE-

**X 4408**

GG-STANDARD

**E1**

ISSUE

### 3. PHYSICAL CHARACTERISTICS:

- 3.1 **OPERATING TEMPERATURE** : -15°C to +70°C.  
 3.2 **BENDING RADIUS** : Min. eightfold thickness of the flat cable according to CENELEC HD 516/S1, table 6.2  
 3.3 **BENDING TEST** : Min. 30 000 bending cycles according to EN 50214.  
 3.4 **FREE HANGING LENGTH** : Max. 45m (max. lift height 80m).  
 3.5 **LIFT SPEED** : Max. 6,3 m/s according to EN 50214.

THICKNESS OF SHEATH						CABLE-DIMENSIONS (approx.) thickness x width	WEIGHT (approx.)	DELIVERY MAKE-UP	STANDARD LENGTH	GG-PART No.
e1	e2		e3							
nom./min.	nom./min.	nom./min.	nom./min.	nom./min.	nom./min.	[mm]	[g/m]	[-]	[km]	
[mm]	[mm]	[mm]	[mm]	[mm]	[mm]	[mm]	[g/m]	[-]	[km]	
1.0 / 0.60	1.1 / 0.68	1.5 / 1.0				6.2 x 28.0	243	E-10	1.0	66797

4. **IDENTIFICATION** : according to customers order.

### P o l y f l e x

flat FRNC-sheated, flexible cable with screened pairs for lift.

**Type LEAFL-2YAENY-OZ 6x2x0,75F sw**

GG-PART No.  
66797

DESIGNED  
STRASSER

CHECKED  
PALMSTEINER

DATE  
20.02.06

EXTERNAL SPECIFICATION  
-

PAGE  
2 of 2